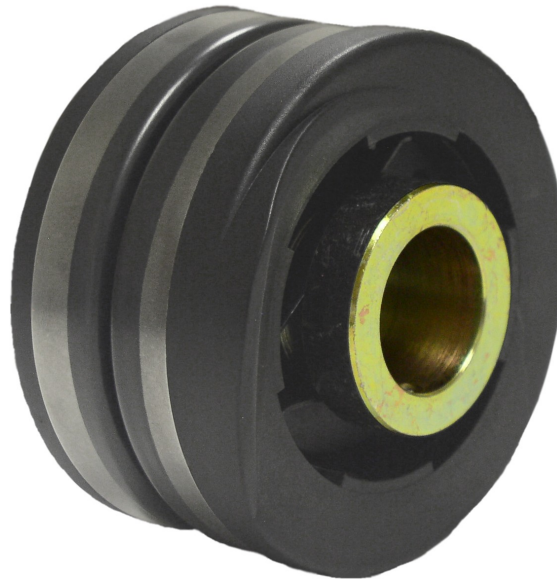


24 & 31 Flute Plasma Pre-Take-Up Assemblies with Metal Locking Collar

For Volkmann 05 BA5/BA8, 06-07 BA5



EE402399

24 Flute Assembly

OEM # 493478, 562595

EE402408

31 Flute Assembly

OEM # 675413

COMPONENTS OF EE402399		
OEM REF.	EPIC PART #	DESCRIPTION
619403	EE481750	Spring (2 per)
248245, 504860, 504878	EE402350	Shell Only, 24 Flute, Plasma (2 per)
622936, 675140	EE481727	Female Half
619387, 675165	EE481728	Male Half
675173	EE481729	Centering Ring
619395	EE481730	Metal Locking Collar
COMPONENTS OF EE402408		
OEM REF.	EPIC PART #	DESCRIPTION
619403	EE481750	Spring (2 per)
105759, 115386, 248237, 615351	EE402351	Shell Only, 31 Flute, Plasma (2 per)
622936, 675140	EE481727	Female Half
619387, 675165	EE481728	Male Half
675173	EE481729	Centering Ring
619395	EE481730	Metal Locking Collar



P O Box 979
Southern Pines NC 28388-0979
845 Valley View Road
Southern Pines NC 28387

Phone: 910-692-5441 or
Toll Free: 800-648-7273
Fax: 910-692-4147 or
Toll Free: 888-692-4147

Email: epic@epicenterprises.com
Website: www.epicenterprises.com

Epic products are intended as replacements for worn or damaged parts in OEM products. OEM Part numbers in (parenthesis) indicate either 1) improved design 2) the part serves the same function as the OEM part, but may differ from the OEM design, 3) it is a component of an assembly where no OEM reference number is available, or 4) it is a repair service for the referenced part.

Parts with EE designations are manufactured by Epic and are not authorized by the original equipment manufacturers., ©Epic Enterprises, Inc., January 2015

EE is an Epic trademark designating Epic parts

Volkmann is a trademark of Jinsheng Group

**Parts and Services
you can rely on!**